

Sticky Keys and Filter Keys

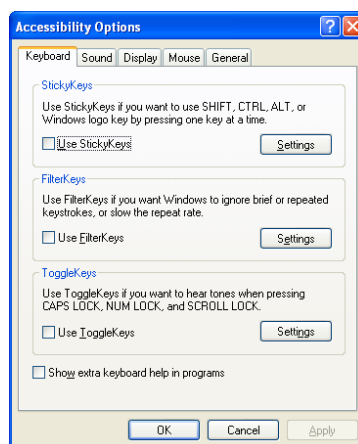
This guide shows you how to enable Sticky and Filter Key settings. Sticky keys allows users to press a simultaneous key command one key at a time, filter keys ignore brief or repeated key strokes.

For example, typing a capital letter with Sticky Keys enabled means pupils can press the shift button and then press the required letter without the need to keep the shift key down.

Instructions

Please note: You may need technical support to complete these tasks in school due to restricted access by the network protection software (Ranger).

1. Click on **START** (bottom left of screen)
2. Click on **Settings**
3. Click on **Control Panel**
4. Double-click on the **Accessibility Options** icon



Sticky Keys

1. Check the box to **Use Sticky Keys**
2. Click on **Settings** to customise settings if required
3. Click on **Apply** to keep new settings.
4. Click on **OK** when finished to close Accessibility Options properties

Filter Keys

1. Check the box to **Use Filter Keys**
2. Click on **Settings** to customise settings if required
The default setting is for keys to be held down for 1 second to register
3. Click on **Apply** to keep new settings.
4. Click on **OK** when finished to close Accessibility Options properties