

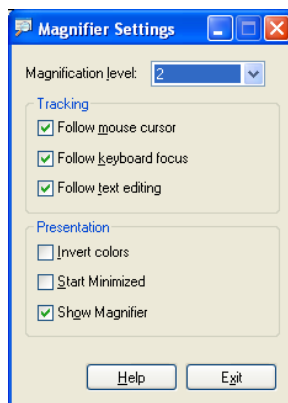
# Windows Magnifier

This guide shows you how to activate Windows Magnifier.

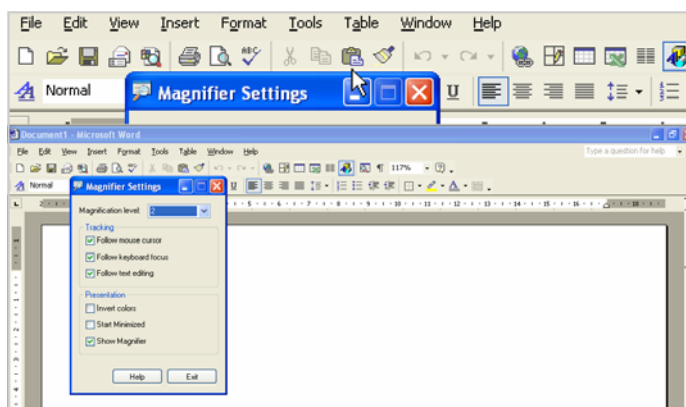
Magnifier adds a bar at the top of your screen in which the area around the mouse pointer is magnified. The magnification level, size of viewing area and other settings can be customised.

## Instructions

1. Click on **START** (bottom left of screen)
2. Click on **Programs**
3. Click on **Accessories**
4. Click on **Accessibility**
5. Click on **Magnifier**



6. Customise settings to suite. When selecting a different setting you get an instant preview.
7. Press the Minimise button to continue to use Magnifier. Click on Exit to close program.



Position your mouse between the normal and magnified view and the pointer will change to a double arrow-headed line.



Click and drag to increase/decrease the magnified view area.