

Changing mouse settings

This guide shows you how to change mouse settings on your computer.

For example, you can change the size of the pointer, slow the speed of the mouse, make it more visible by leaving a trail and highlight it's on screen location.

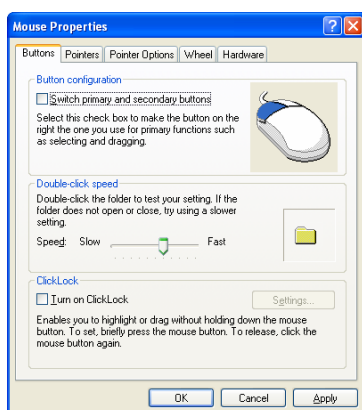
Instructions

Please note: You may need technical support to complete these tasks in school due to restricted access by the network protection software (Ranger).

1. Click on **START** (bottom left of screen)
2. Click on **Settings**
3. Click on **Control Panel**
4. Double-click on the **Mouse** icon to open Mouse Properties



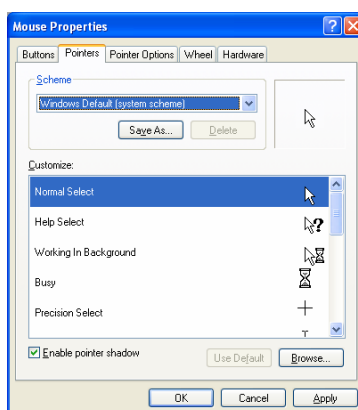
Mouse



Buttons tab

For a left-handed pupil, to swap the left and right mouse button functions check the **Switch primary and secondary buttons** box.

Click on **Apply** to keep new settings. Choose another tab or click **OK**.

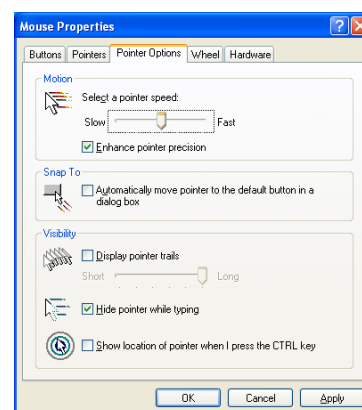


Pointers tab

To change the size of the mouse pointer click the drop-down button under the **Scheme** heading, (Windows Default, system scheme is shown).

You can select Large or Extra Large in different schemes. Select any to preview.

Click on **Apply** to keep new settings. Choose another tab or click **OK**.



Pointer Options tab

Drag the slider bar under the **Motion** heading to slow the speed of the pointer.

Visibility

Check the box to **Display pointer trails** to add a trail to the pointer.

Check the box to **Show location of...** to show the location of the pointer when you press the Ctrl key.

Click on **Apply** to keep new settings. Choose another tab or click **OK**.