

Changing the Desktop settings

This guide shows you how to change Windows default Desktop settings.

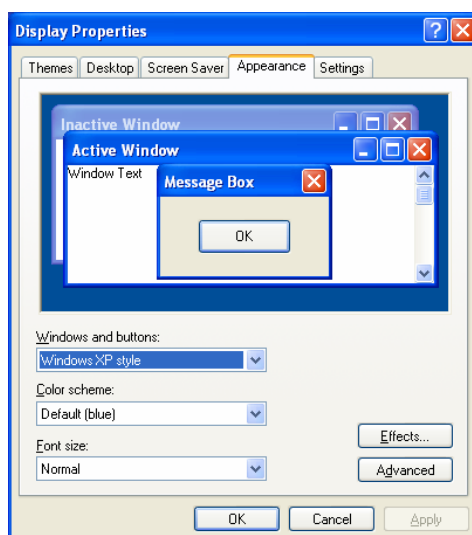
For example, you can make the desktop icons and font size on menu bars larger.



Instructions

Please note: You may need technical support to complete these tasks in school due to restricted access by the network protection software (Ranger).

1. Right-click anywhere in space on your Desktop screen
2. Click on **Properties** (bottom of list)
3. Click on the **Appearance** tab



To make font size larger

1. Click on the drop-down button under the Font size heading (Default setting shown is Normal)
2. Select either **Large** or **Extra Large** size
3. Click on **OK**
(These settings will applied to all program menus)

To make icons larger

1. Click on the **Effects** button
2. Check the **Use large icons** box
3. Click on **OK**

