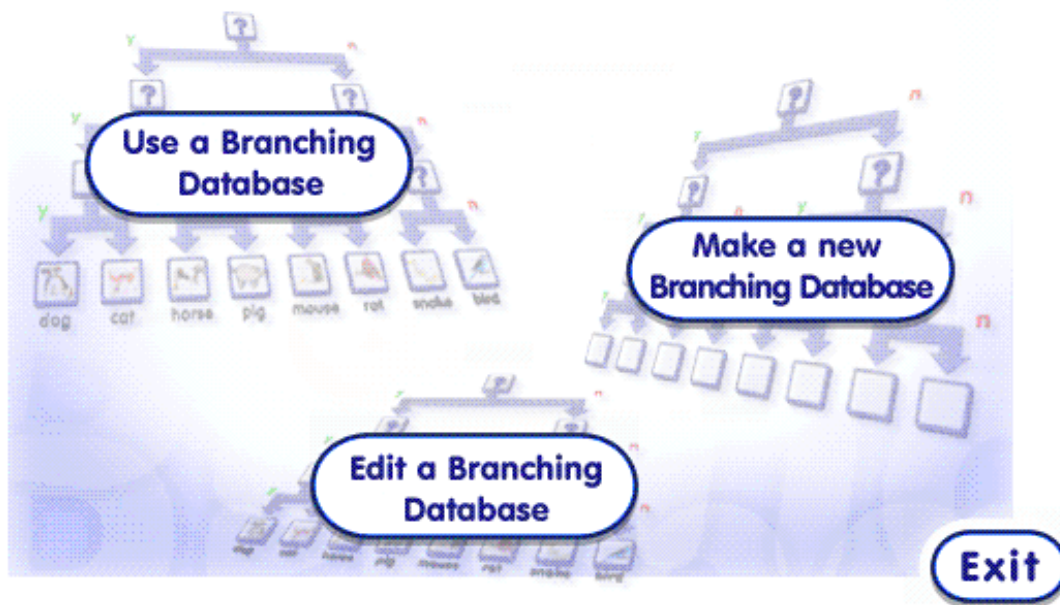


# Primary Branch



QCA UNITS:

Unit 2E Questions and answers

Unit 4C Branching databases

## Getting Started

Launch Primary Branch from the Windows 'Start' menu.

'Use a Branching Database' is the option to choose when you wish to work with a branching database which has been created and saved.

'Make a new Branching Database' is the option to choose when you want to create a new database by selecting items from the item 'bank'. Or by entering items of your own.

'Edit a Branching Database' will allow you to make changes to a database which has been created and saved earlier.



To get started, choose 'Make a new Branching Database'. After you have clicked the button you will be asked to name the new database, do so and click 'ok'. You will be presented with the main Primary Branch work area.

## The Icons

Returns you to the main menu screen.



Click on this icon to open an existing branching database



Search a branching database.



Print a branching database.



Play the game



Zoom out from a branching database. Use this to fit more of the database on screen.



Zoom in to a branching database. Use this to increase the size of the database on screen.



Delete a highlighted object.



Import a sound to a branching database.



Import a picture to a branching database.



Access on-line help.



## Forming a Database

After clicking 'go' you will enter the database building screen where your list of objects will appear beneath a flashing frame containing the word 'click'.



Angel Fish  
Budgie  
Dog  
Hamster  
Tarantula

The mouse cursor has now turned into a hand. When the cursor takes on this appearance you can use it to scroll through a branching database.

In order to form the database you must divide the list of objects by asking relevant questions.

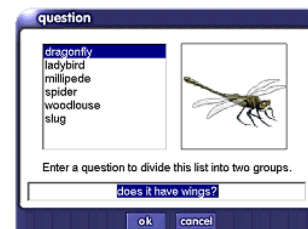
## Dividing a List of Objects

Hover the cursor over the flashing frame until it changes into a pointer.

Click on the flashing frame to launch the 'question' window. Your list of objects will appear in the window, along with the instruction: 'Enter a question to divide the list into two.'

Enter a question and click 'ok'.

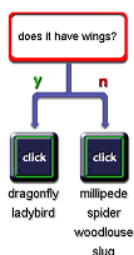
To give users the opportunity to review the question, you can configure Primary Branch to ask for confirmation before applying the question to each of the objects on the list



The same question will be asked of every object in turn.

When the list is complete you will see the first two branches of the new database on screen, with the flashing frame replaced by a question mark.

If the 'Show Questions as Tips' option is selected in 'Setup Manager', hovering the mouse cursor over this question mark will cause a text box to appear above it in which you will be able to see a reminder of the question.



Clicking either of the two new flashing frames will launch the question window again, requiring you to divide the objects by asking a second question.

This process is repeated until every object from the original list is occupying its own branch.

## Changing a Question

To change a question, simply highlight it by clicking with the mouse, then click the 'edit' button. A window will appear in which you can enter the new question.

## Changing the View

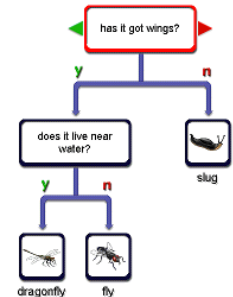
You will notice that branching databases can soon outgrow the confines of the screen. Even a modest list of five objects can outgrow the capabilities of the average monitor.

Primary Branch solves this difficulty in a number of ways: It allows you to scroll through the database by 'dragging' hidden parts of it on to the screen. It allows you to 'zoom' out from the

database, effectively shrinking it to fit the screen, and the 'map' facility can be used to quickly change the visible part of the screen. There are also scroll bars available at the bottom and to the sides of the screen.

If you highlight a question by clicking on it, red and green arrows will appear at either side of the question box. Click on these to navigate to the left or the right.

To scroll through a database, either click and drag with the mouse (the cursor must look like a hand to do this) or use the scroll bars which automatically appear whenever a branching database grows too large to be displayed on the screen.

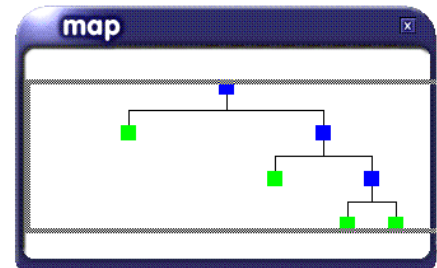


The second method involves using the two zoom icons to 'step back' from, or to get a closer view of the database. By stepping back you will be able to fit all of the database on screen.



The disadvantage of this method is that the further you step back from a database the less definition you will find in the images on the branches.

Turn the 'map' facility on by clicking the 'map' icon. This will give you a stylised view of the visible portion of the screen the flashing part of the map indicates your current location. You can click and drag within the 'map' window to refresh the database on screen.



## Playing the Game

Ask the children to select an object from the database, and then click the 'play' button.

Primary Branch will ask the questions which have been used to form the branching database, using the answers to eliminate objects until only one remains.

When it has identified the object, Primary Branch will ask 'Is the answer: ...?' If all the questions have been answered truthfully, Primary Branch cannot get the answer wrong.

However, it is possible to 'lie' to Primary Branch. If someone should decide to say 'no', even though the answer is correct, Primary Branch will ask for the correct answer. If one of the objects from the objects list is entered, Primary Branch will close the question window down. If a new object is introduced, Primary Branch will add the new object to the branch where the 'correct' answer is housed before asking for a question to divide the two objects.

## Searching a Database

With a large branching database it can often be difficult to locate an object. This is where the 'Search' facility comes in.

Click the 'Search' icon or choose 'Search' from the 'Database' drop-down menu. After the 'Search' window is launched, enter the name of the object you wish to find, and then click 'ok'. The search facility is not case sensitive.

Primary Branch will search the database and bring the portion of it where the object is found to the centre of the screen.

## **Saving a Database**

Click the 'Save' icon or choose 'Save' or 'Save As' from the 'File' drop-down menu. Browse for the location where you want the file to be stored, then click 'Save'.

By default, branching databases are saved to the Primary Branch program group. Primary Branch remembers the location of all the images; which banks they have come out of, for example, and loads them up the next time you use the database.

However, you should remember not to save databases which contain custom images to a drive, folder or disk, other than the default location, otherwise the images will not load next time the database is used.

Similarly, if you wish to use a branching database on another computer on which Primary Branch is installed, you must also load the images you require into the bank in order for them to load from a saved database.

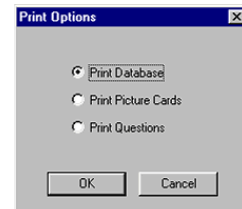
## **Printing a Database**

Primary Branch gives you a series of useful printing options. Clicking the 'print' icon will send the branching database directly to your printer.

The default paper size is A4. Primary Branch will automatically calculate how many pages to print the database across, before printing the pages in sequence.

You can also select 'Print Database' from the 'print' drop-down menu.

The second option is 'Print Picture Cards'; choosing this option will make Primary Branch print the images from your database on a series of 'cards', each of the images will have its title displayed beneath it. Once again, Primary Branch will calculate how it can make best use of the A4 paper in your printer by printing multiple cards to each page which only need to be cut out..



The final option is 'Print Questions'; choose this to print each question in the database on a separate 'card'. When this option is selected, Primary Branch prints five questions to the page.

To see a preview of how Primary Branch will arrange the database for printing, select 'Print Preview' from the 'File' drop-down menu.